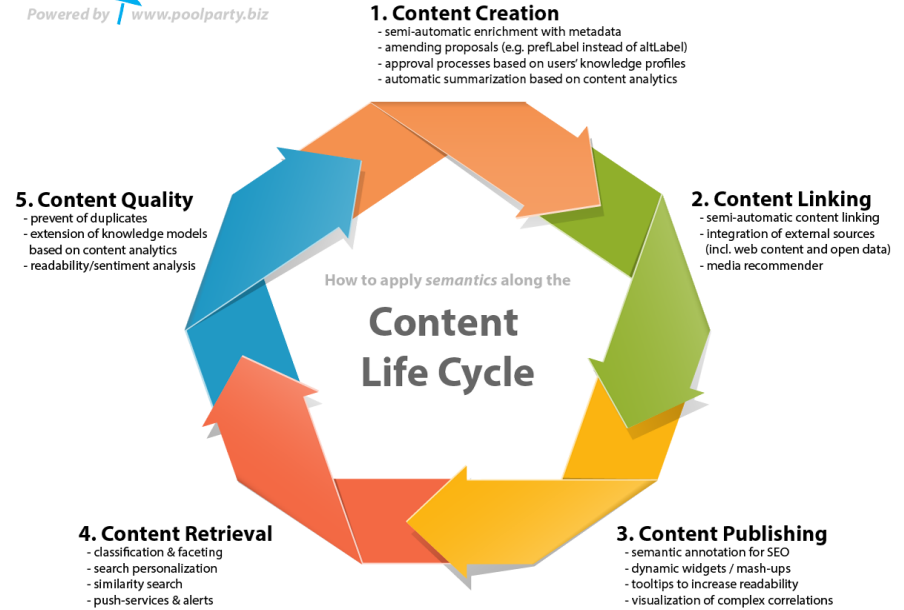




# Integrate your CMS with PoolParty

Powered by  [www.poolparty.biz](http://www.poolparty.biz)



# Basic components: CMS



**So you have a content management system?**

Yes

**And you want to annotate your content?**

Yes

**Maybe you want to improve the search experience of your CMS?**

Yes, this would be great



# Basic components: PoolParty

**You use PoolParty to describe concepts?**

Yes

**And the concepts match the specific domain of the content of your CMS?**

Yes, but there are some parts missing in the taxonomy at the moment. We want to optimize this in the future.



# CMS: storing metadata

**Does your CMS support the storage of metadata?**

Yes

**Is it possible to store URIs as metadata?**

Yes, this should be possible.



# CMS: customizing the workflow I

**Does your CMS allow you to customize the lifecycle of your content? E.g. is it possible to trigger an action after you created or imported content?**

**Yes**

**Is it possible to trigger a REST call in the customized lifecycle action?**

**Yes**



# CMS: customizing the workflow II

**Can you provide the content you want to tag as pure text or as a file (.pdf, .doc, .docx, .xls, ...) for the triggered REST call?**

**I think so**

**Is it possible to consume the JSON result of the REST call in the customized lifecycle action?**

**Yes**



# Integration - Step 1

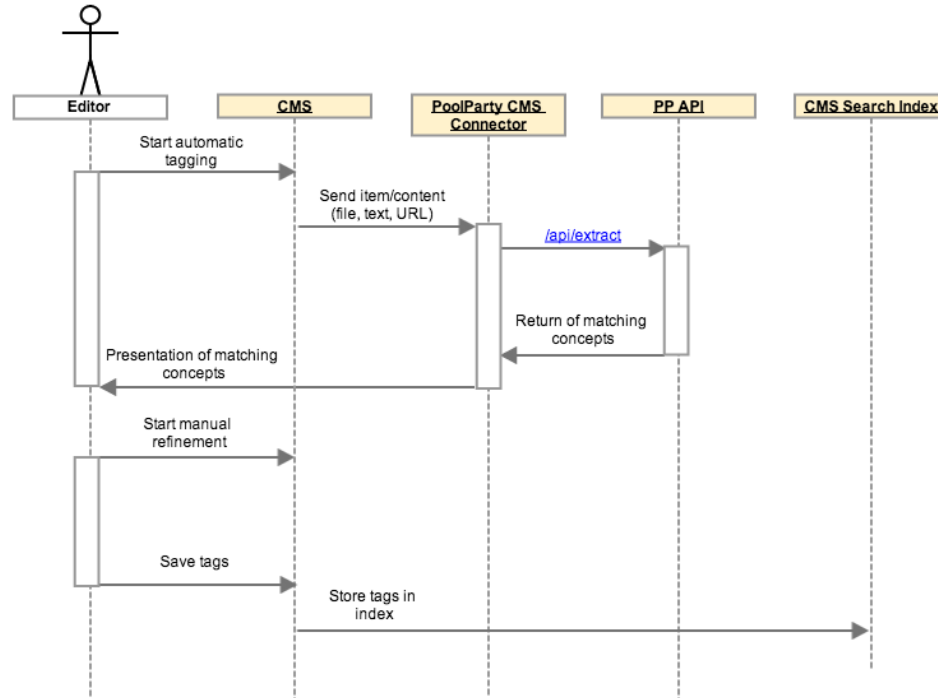
**This means, you can now start building the first step of your PoolParty integration:**

- 1) Trigger a REST call in CMS to use PoolParty extraction service: [documentation](#)**
- 2) Consume and store the retrieved concept URIs as metadata in your CMS**



# Integration - Step 1 sequence diagram

Sequence Diagram - Semi-automatic Tagging





# Questions



In the diagram you describe a manual refinement process. What is this?

**Do you think that PoolParty is able to annotate your content absolutely perfect?**

No

**Maybe you want to be able to improve the suggested automatic tagging result?**

Yes, this could be useful in the future

# Manual refinement of automatically generated metadata



**What actions of refinement can you think of?**

Deletion of obsolete concepts and adding of missing concepts

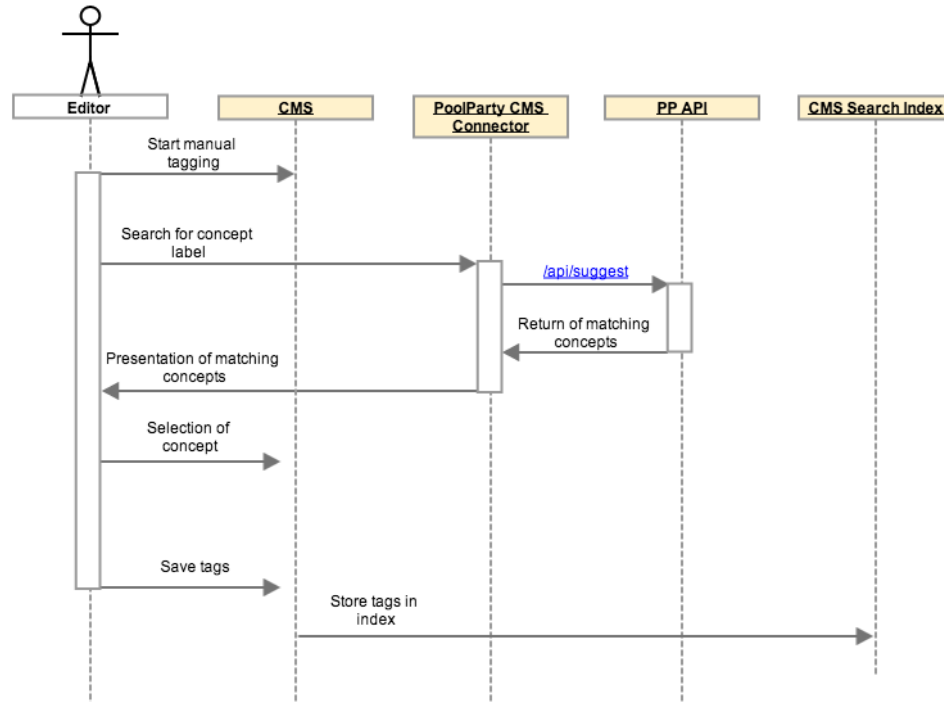
**The deletion can be handled by the CMS itself. But what about adding missing concepts? How do you select them?**

Maybe PoolParty provides an API service that supports concept search and selection? The suggest service looks promising: [documentation](#)



# Selecting specific concepts manually

Sequence Diagram - Manual Tagging





# Presenting PoolParty concepts I

Ok, now I can enrich the metadata of my content with PoolParty concepts as URIs. But how do I present these tags in my CMS? URIs are not human readable!

**When it comes to the presentation of concepts, can you do a lookup to transform URLs to readable tags?**

Yes, this should be possible



# Presenting PoolParty concepts II

You could for example directly use the concept description service: [documentation](#). But maybe this hampers performance?

Good point

Maybe you can establish a caching mechanism inside your CMS for quick lookup? Or you could simply store at least the prefLabels of annotated concepts next to the URIs?

I have to investigate the best solution...



## Integration - Step 2

**This means, you can now improve the first step of your PoolParty integration:**

- 1) Manually improve automatic tagging results**
- 2) Present concept prefLabels next to documents, based on the annotated URIs**



# Semantic search I

Great, now I can review PoolParty concepts next to my documents. But how can I make use of the concepts during search?

**What label data does a concept contain?**

There is a `prefLabel`, `altLabels` and `hiddenLabels`...

**... so you know the synonyms of a concept, right?**

Ahh! That means I can search for a label and retrieve documents that contain synonyms as well. All based on the stored URI of the concept!



# Semantic search II

And you are not restricted to labels of a concept.  
What other types of data does a concept provide?  
There are links to broader and narrower concepts...  
... so you can refine or coarsen your search  
interactively...  
... and there could be related concepts. This means  
you could provide a search functionality where you  
can constantly approach your target. This is nice!





# Semantic search III

**What else could the SKOS based hierarchy used for? Think about the upper levels of the tree...**

**You mean the concept schemes?**

**Right. What is the intention of grouping concepts into one concept scheme?**

**You group concepts into one concept scheme that have something in common. Like all places or all organizations...**

**And this grouping information you could use to group the results of your search.**

# Semantic search IV



And this grouping information you could use to group the results of your search... What idea do you have to make use of building groups of concepts?

One could collect search results, grouped by concept schemes. Isn't this called 'faceted search'?

Exactly



# Improving the thesaurus I

But now I observed some gaps in my thesaurus. What can I do to improve my knowledge graph?

**Do you want the content editor to improve the thesaurus?**

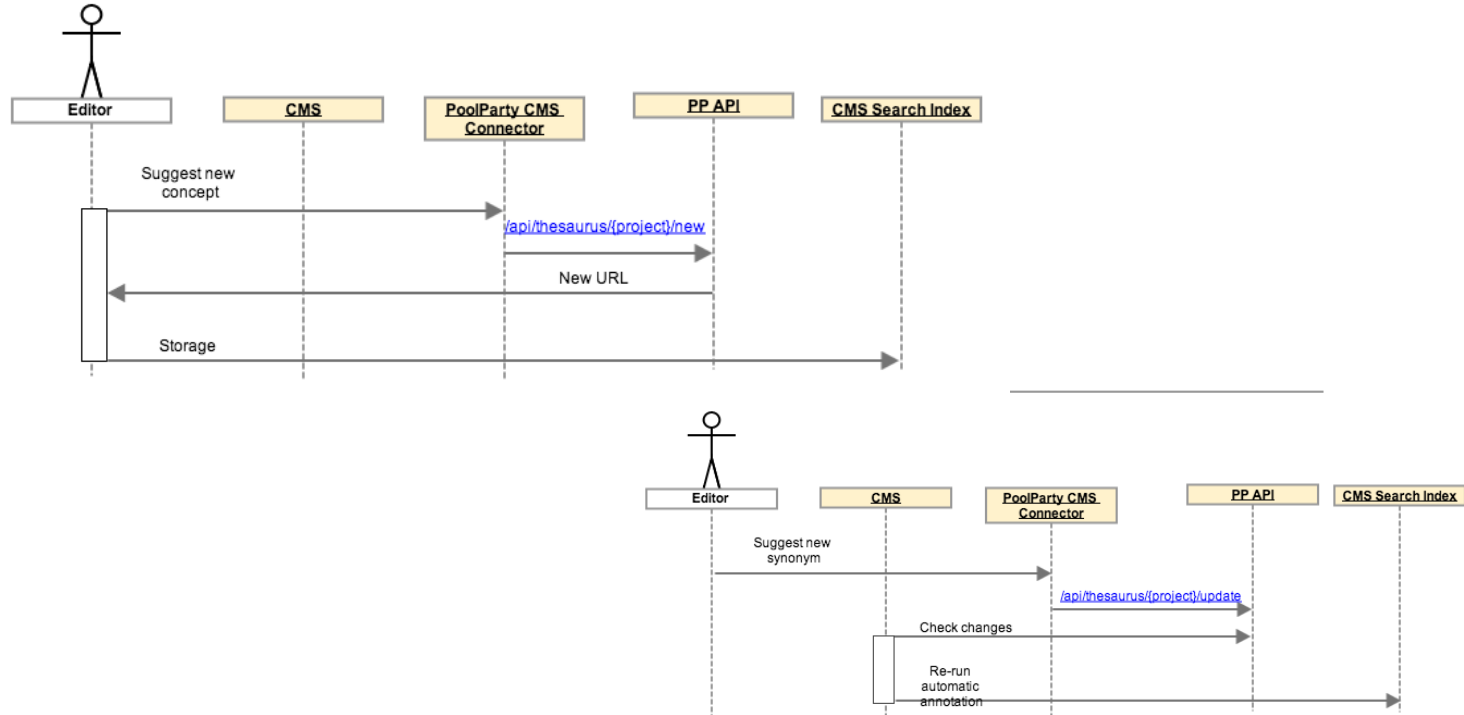
Yes, our content editors could add new concepts in the PoolParty project...

... and you could build into your CMS a functionality to send concept suggestions to PoolParty via API: e.g. [create concept](#), or [suggest free concept](#).



# Improving the thesaurus II

Sequence Diagram - Improve Thesaurus





# Improving the thesaurus III

And what else source of your concepts could you think of?

???

Where is the knowledge stored in your CMS?

In the documents?

Exactly! Why not simply use the content of your CMS?

And of course there is an API service...

How did you guess? You can of course send content to the corpus in your PoolParty!

# Now you can start with the implementation!



## Three pillars of PoolParty



<http://www.poolparty.biz/>

<http://doc.poolparty.biz/>

<http://faq.poolparty.biz/>